

## Work continuing for The Children's Hospital at Westmead redevelopment from Friday 1 December 2023

### The NSW Government is investing \$619 million in the redevelopment of The Children's Hospital at Westmead.

Work is continuing for the new Paediatric Services Building, multi-storey car park, refurbishment of some existing areas of the hospital and a revitalised forecourt. This work includes:

- Structure and services works are continuing on the Paediatric Services including suspended slab concrete pours.
- Installation of solar panels, façade and internal fit-out is underway for the new multi-storey car park.
- Landscaping and structural steel installation works for the canopy and retail pod is underway for the new revitalised forecourt called 'KidsPark'.
- Refurbishment works are underway within the existing hospital.
- Works for the Viral Vector Manufacturing Facility (VVMF) Stage 2 including scaffold and structural steel installation within and around the Kids Research (KR) building. Construction works are continuing within the Innovation Centre.

Health Infrastructure has engaged Ford Civil Contracting, Kane Constructions and Roberts Co for The Children's Hospital at Westmead Stage 2 Redevelopment.

Construction of the redevelopment started in 2022 and is expected to be completed by 2025.

### Our work hours

Our work times are during standard constructions between 7am to 6pm for Monday to Friday and 8am to 5pm for Saturdays. We will let you know in advance of any changes to these days and times.

### How will the work affect you?

For your safety, please stay on marked paths, and follow the signs or any directions from site staff during construction.

Our work may be noisy but every effort will be made to minimise impacts on residents and businesses.

Noise, dust and vibration will be closely monitored. This includes mitigation measures such as:

- A Class and B Class hoardings
- Programming noisy works to occur during the day
- Noise and vibration monitors
- Water trucks to manage dust
- Noise blankets

For more information on what's happening around the construction site, you can visit our map on our website.

## Holiday period site closure

The site will be closed for the holiday period from Saturday, 23 December 2023 to Sunday, 7 January 2024.

During this time no work will be undertaken. We thank you for your patience as works have progressed at the project site this year and we wish you a happy and safe holiday period.

## Keeping you informed

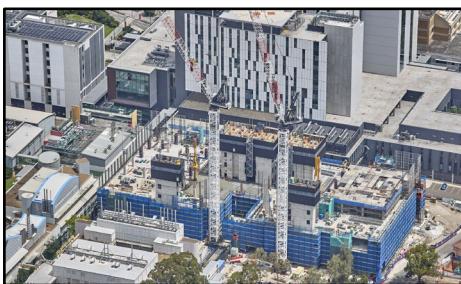
If you would like to speak with a member of the project team directly, you can call us any time on our 24/7 project information line on 9978 5401 or email us at [NSWH-HI-Kids@health.nsw.gov.au](mailto:NSWH-HI-Kids@health.nsw.gov.au).

Thank you for your patience while we complete this important redevelopment for the Westmead community.

## Location of work activities



## Site construction progress photos



Site of the new Paediatric Services Building



'KidsPark' forecourt



Site of new multi-storey car park

For more information visit our website via the QR code below, or at:

<https://westmeadkidsredevelopment.health.nsw.gov.au/>

