

Work is continuing for The Children's Hospital at Westmead redevelopment from 1 June 2024

The NSW Government is investing \$619 million in the redevelopment of The Children's Hospital at Westmead

Work is continuing for the new Paediatric Services Building, multi-storey car park, refurbishment of some existing areas of the hospital and a revitalised forecourt. This work includes:

- Superstructure, services and fit-out works are continuing on the Paediatric Services Building including suspended slab concrete pours and façade installation.
- Internal fit-out, landscaping and playground works are being finalised for the new multi-storey car park, scheduled to be opened this month.
- Services and landscaping installation works are being finalised for the canopy, retail pod and playground for the revitalised forecourt called 'KidsPark.'
- Works are ongoing within the existing hospital for refurbishments (Galleria stairs, airlocks, Clinical Research Centre and Pathology Collection and Kids Pathology). In addition, works for the level 3 linkway corridor widening are progressing. Galleria Stairs, Clinical Research Centre and Pathology Collections are due to be completed this month.
- Works are continuing for the Viral Vector Manufacturing Facility.

Health Infrastructure has engaged Ford Civil Contracting, Kane Constructions and Roberts Co for The Children's Hospital at Westmead Stage 2 Redevelopment.

Construction of the redevelopment started in 2022 and is expected to be completed by 2025.

Our work hours

Our work times are during standard constructions between 7am to 6pm for Monday to Friday and 8am to 5pm for Saturdays. We will let you know in advance of any changes to these days and times.

How will the work affect you?

For your safety, please follow direction of signage and site staff for your safety. There are some changes to traffic conditions while work is taking place including intermittent stoppages and lane closures.

Our work may be noisy, but every effort will be made to minimise impacts on residents and businesses.

Pedestrian access within Kids Research Lane and Research Road is closed while work is being carried out in this area.

A new roundabout and pedestrian crossings has opened at the intersection of Labyrinth Way and Redbank Road, with the existing pedestrian crossing on Redbank Road (on the bridge) removed. The roundabout will enhance safety and reduce waiting times for motorists turning right from Labyrinth Way onto Redbank Road.

Noise, dust and vibration will be closely monitored. This includes mitigation measures such as:

- A Class and B Class hoardings
- Programming noisy works to occur during the day
- Noise and vibration monitors
- Water trucks to manage dust
- Noise blankets

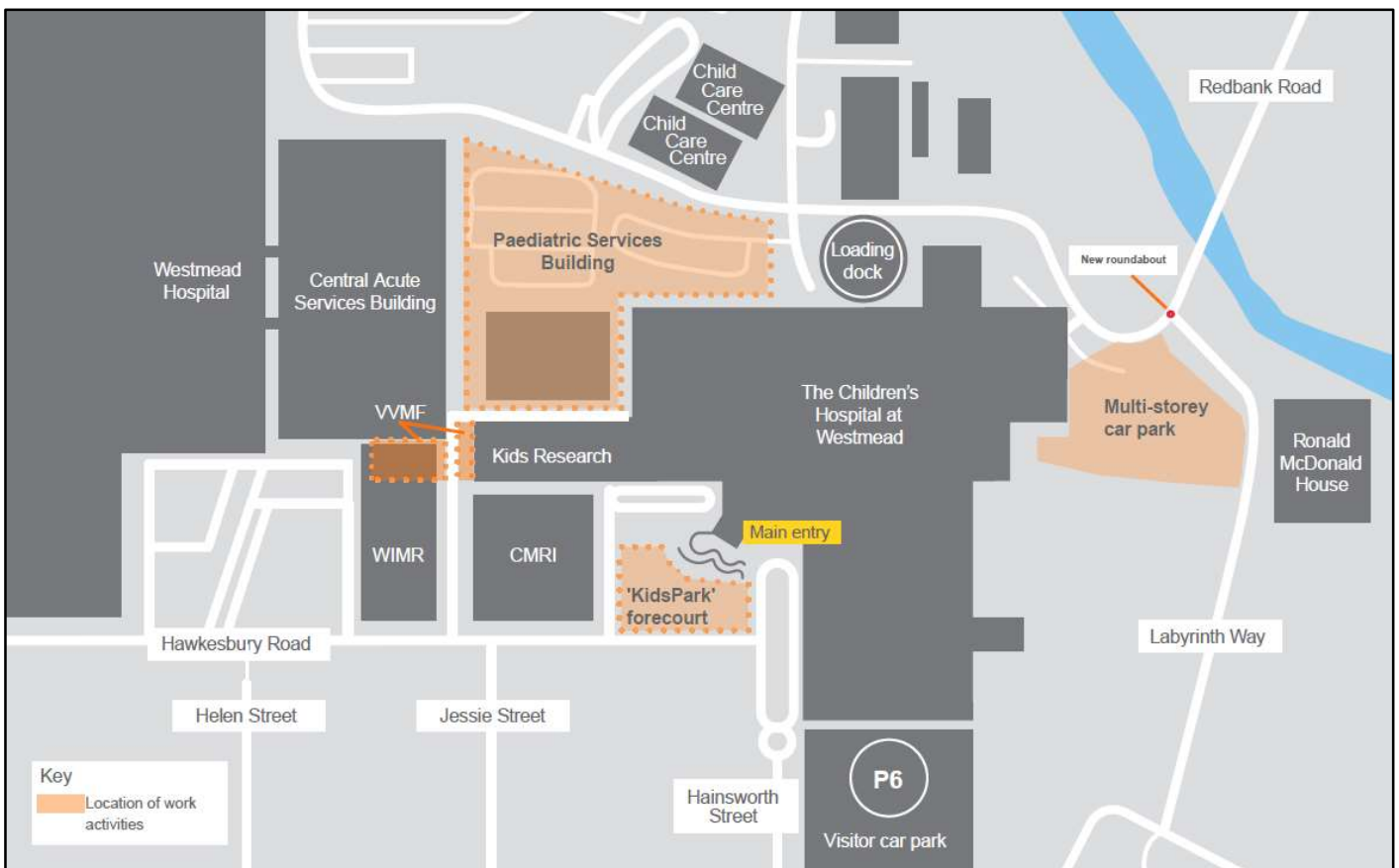
For more information on what's happening around the construction site, you can visit our map on our website.

Keeping you informed

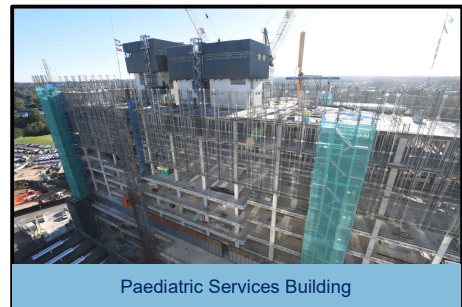
If you would like to speak with a member of the project team directly, you can call us any time on our 24/7 project information line on 9978 5401 or email us at NSWH-HI-Kids@health.nsw.gov.au.

Thank you for your patience while we complete this important redevelopment for the Westmead community.

Location of work activities



Site construction progress photos



For more information visit our website via the QR code below, or at:

<https://westmeadkidsredevelopment.health.nsw.gov.au/>

