

Work is continuing for The Children's Hospital at Westmead redevelopment from 30 April 2024

The NSW Government is investing \$619 million in the redevelopment of The Children's Hospital at Westmead

Work is continuing for the new Paediatric Services Building, multi-storey car park, refurbishment of some existing areas of the hospital and a revitalised forecourt. This work includes:

- Superstructure, services and fit-out works are continuing on the Paediatric Services Building including suspended slab concrete pours, jumpform dismantle and façade installation.
- Internal fit-out, landscaping and playground works are ongoing for the new multi-storey car park.
- Services and landscaping installation works are progressing for the canopy, retail pod and playground for the revitalised forecourt called 'KidsPark.' This includes asphaltting works on Labyrinth Way.
- Works are ongoing within the existing hospital for refurbishments (Corridor widening, Galleria stairs, airlocks, Clinical Research Centre and Pathology Collection, Gait Lab and Kids Pathology).
- Work is progressing for a small roundabout at the intersection of Redbank Road and Labyrinth Way which includes new pedestrian crossings, installation and upgrade of adjacent pavements and footpaths around the roundabout; and upgraded lighting and traffic signage.

Health Infrastructure has engaged Ford Civil Contracting, Kane Constructions and Roberts Co for The Children's Hospital at Westmead Stage 2 Redevelopment.

Construction of the redevelopment started in 2022 and is expected to be completed by 2025.

Our work hours

Our work times are during standard constructions between 7am to 6pm for Monday to Friday and 8am to 5pm for Saturdays. We will let you know in advance of any changes to these days and times.

How will the work affect you?

For your safety, please follow direction of signage and site staff for your safety. There are some changes to traffic conditions while work is taking place including intermittent stoppages and lane closures.

On Saturday 11 May 2024, Labyrinth Way will be closed from 8am to 5pm and detours will be in place with access via Paringa Avenue. Access can be made to Cumberland Hospital via Fleet Street. Pedestrian access will be maintained.

Our work may be noisy, but every effort will be made to minimise impacts on residents and businesses.

Noise, dust and vibration will be closely monitored. This includes mitigation measures such as:

- A Class and B Class hoardings
- Programming noisy works to occur during the day
- Noise and vibration monitors
- Water trucks to manage dust

- Noise blankets

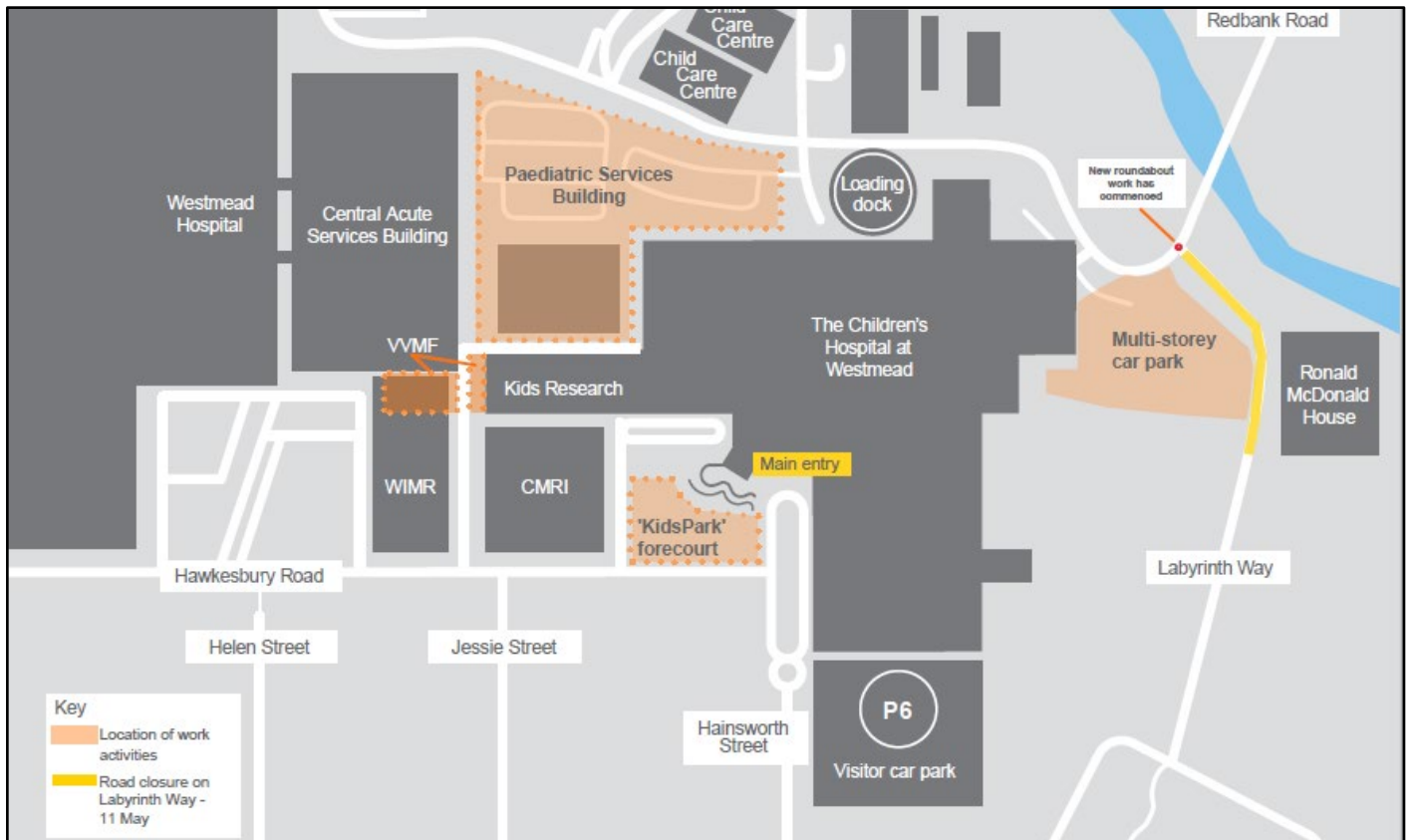
For more information on what's happening around the construction site, you can visit our map on our website.

Keeping you informed

If you would like to speak with a member of the project team directly, you can call us any time on our 24/7 project information line on 9978 5401 or email us at NSWH-HI-Kids@health.nsw.gov.au.

Thank you for your patience while we complete this important redevelopment for the Westmead community.

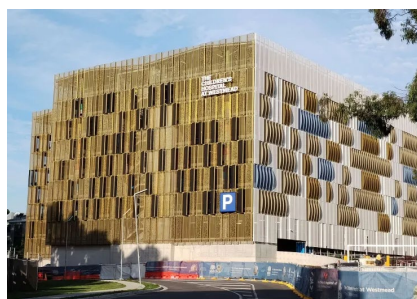
Location of work activities



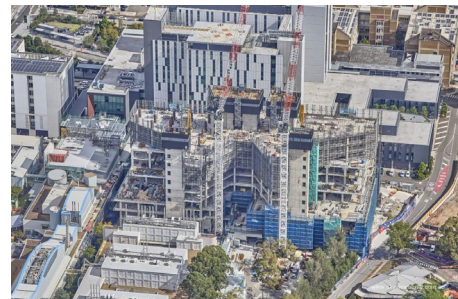
Site construction progress photos



Construction underway for 'KidsPark'



Multi-storey car park



Paediatric Services Building

For more information visit our website via the QR code below, or at:

<https://westmeadkidsredevelopment.health.nsw.gov.au/>

