

THE CHILDREN'S HOSPITAL AT WESTMEAD

Refurbishment Project

As part of The Children's Hospital at Westmead's \$619 million Stage 2 Redevelopment project, we're upgrading areas across levels 1, 2 and 3 of the existing hospital. Here is a breakdown of what's happening.



Pathology on level 2 is expanding to include more lab space.



A newly designed Central Specimen Reception Area and bigger blood bank.



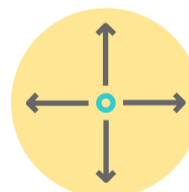
The redesign of the staff dining room.



Clinical Research Centre (CRC) will move from Kids Research to the former ED.



Pathology collections will move to the former ED.



The level 3 linkway will be widened between Block K and our hospital.



A Viral Vector Manufacturing Facility (VVMF) will be located on the Kids Research (KR) roof and provide a world-leading research space.



The Gait Lab will relocate to the function room and dining room on level 1. It will include a purpose-built walking track!



Galleria upgrades will include new weather protected entryways and a staircase to link levels 1 and 2.

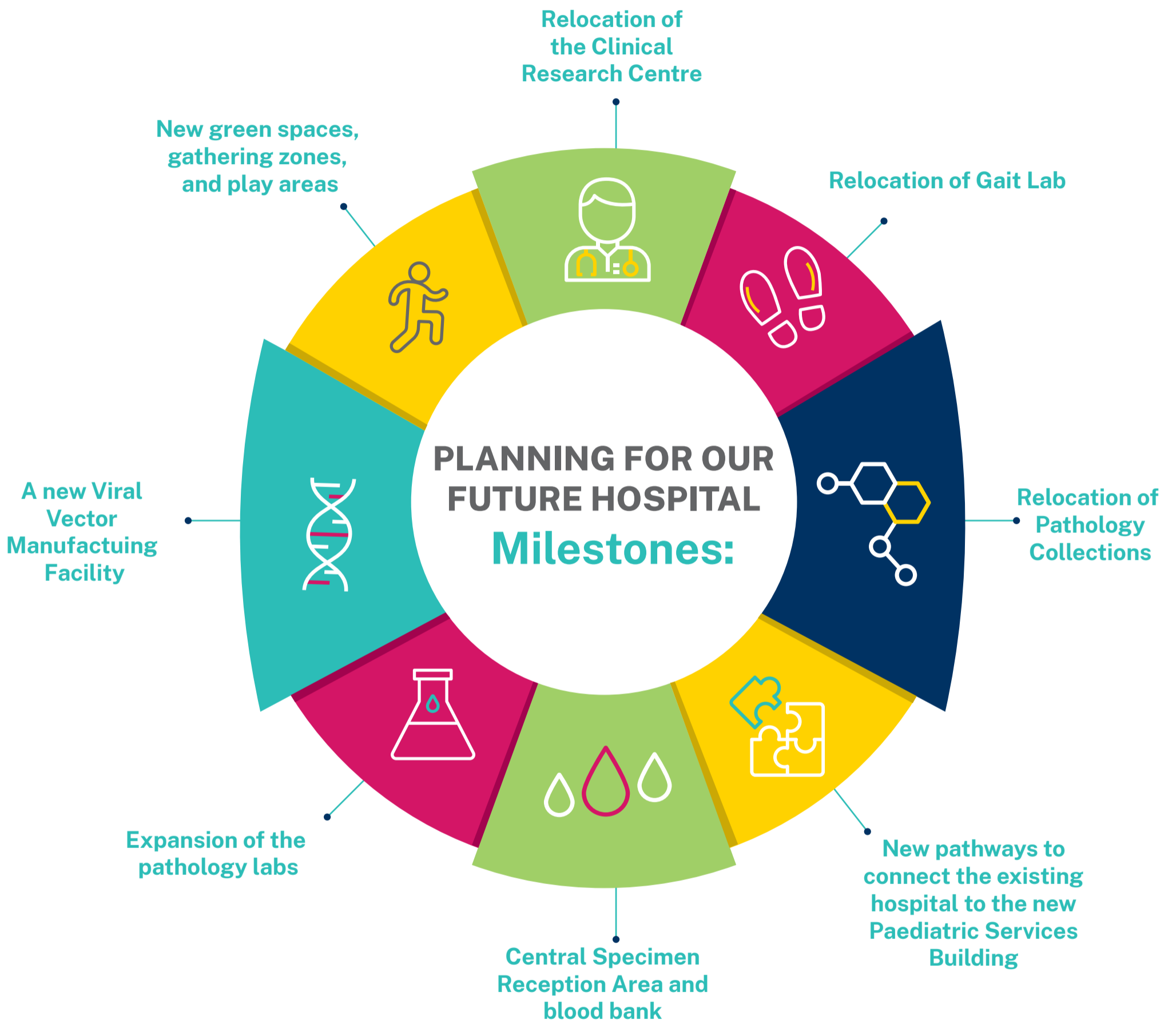
Managing the works:

Our community's safety and wellbeing are our priority. The redevelopment project team will closely manage noise, vibration and dust levels and update the impacted departments regularly.

We appreciate your patience while work is underway.
If you have questions, email SCHN-Redev@health.nsw.gov.au
Find out more at westmeadkidsredevelopment.health.nsw.gov.au



The Sydney
children's
Hospitals Network



THE CHILDREN'S HOSPITAL AT WESTMEAD

Pathology Collections relocation

Level 2

Pathology
new location

P6
visitor
car park

Pathology
old
location

New
forecourt
entry
under
construction

Hainsworth Street

Hawkesbury Road

We have
moved!



If you have any questions, please contact
Pathology Collections on 9845 3276 or email
SCHN-PathologyCollections@health.nsw.gov.au



The Sydney
children's
Hospitals Network

THE CHILDREN'S HOSPITAL AT WESTMEAD

Pathology Collections relocation

Level 2

Pathology
future location

P6
visitor
car park

Pathology
location

Hainsworth Street

We are
moving!

New
forecourt
entry under
construction

Hawkesbury Road

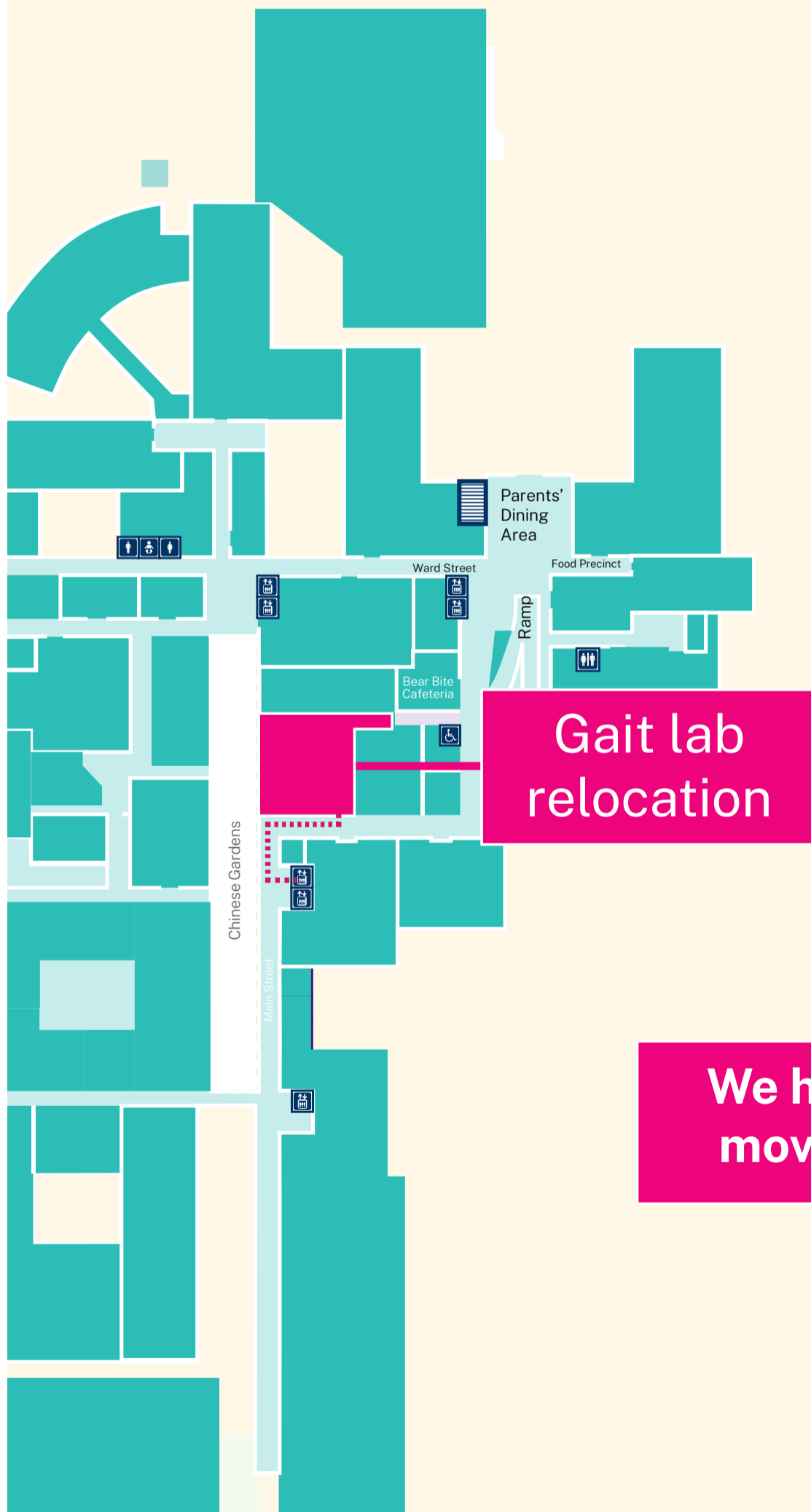
If you have any questions, please contact
Pathology Collections on 9845 3276 or email
SCHN-PathologyCollections@health.nsw.gov.au



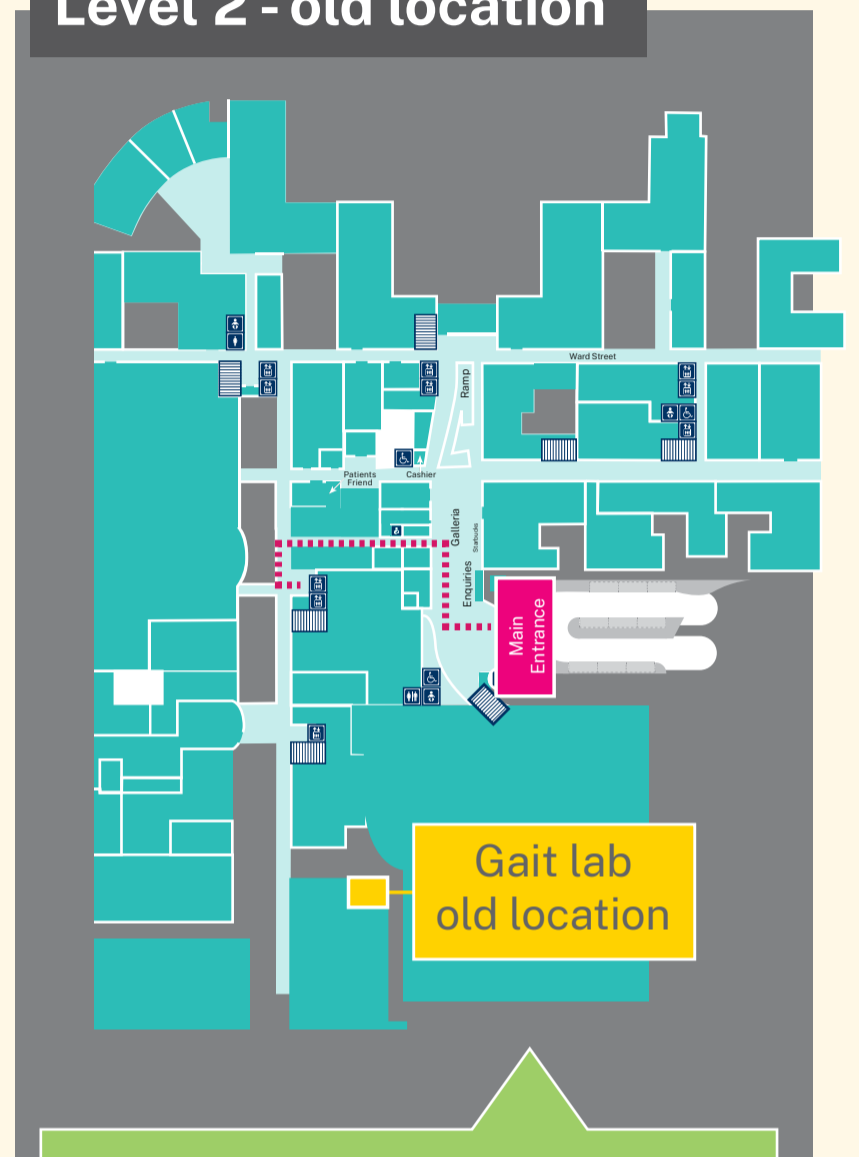
The Sydney
children's
Hospitals Network

Gait Labs relocation

Level 1 - relocation location



Level 2 - old location



Directions:
Follow broken line from
main entrance to lifts.

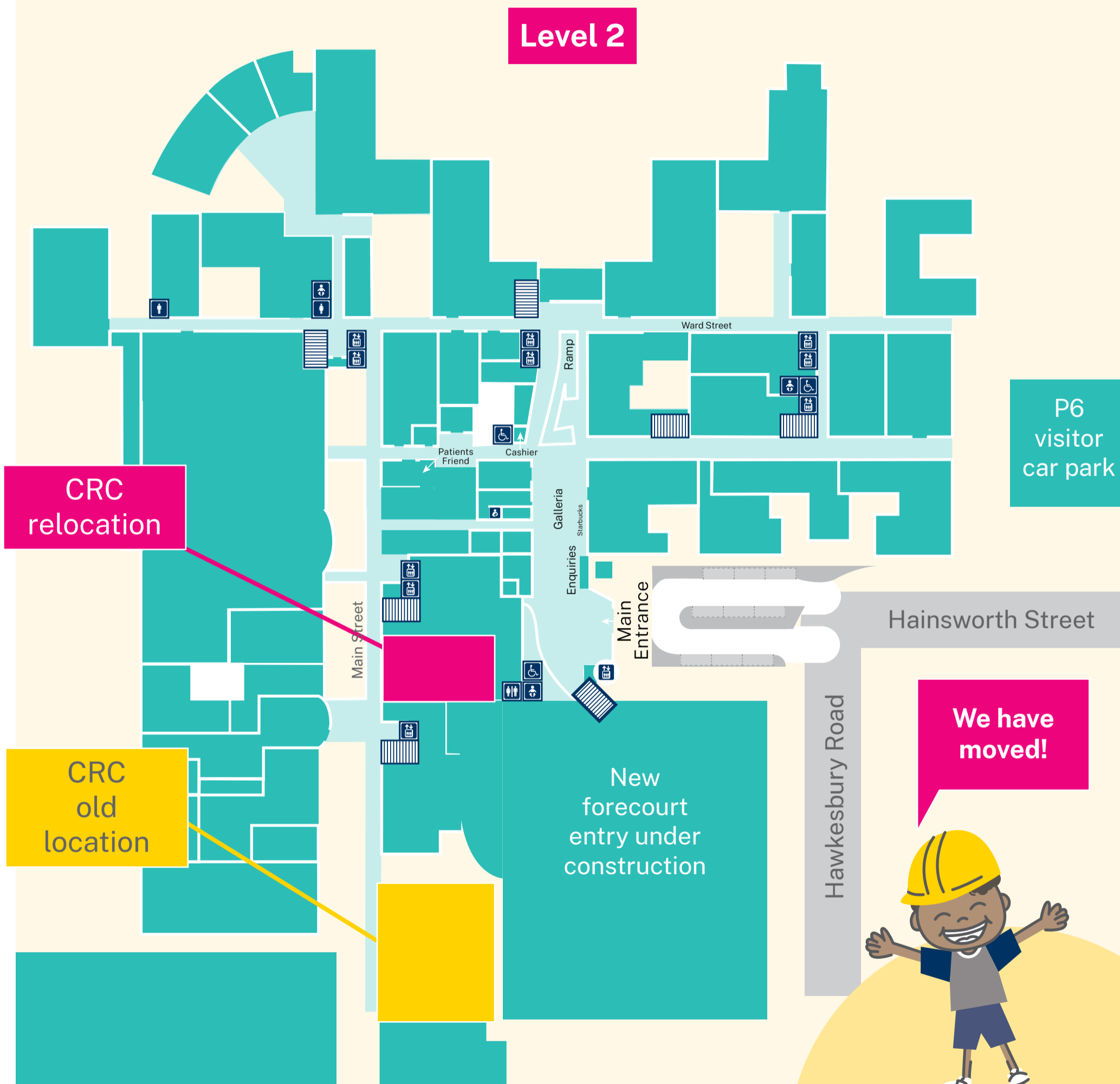
**We have
moved!**



THE CHILDREN'S HOSPITAL AT WESTMEAD

Clinical Research Centre (CRC) relocation

Level 2



CRC relocation

CRC old location

P6 visitor car park

Hainsworth Street

Hawkesbury Road

New forecourt entry under construction

We have moved!

If you have any questions, please contact
Clinical Research Centre on 9845 1387
or email SCHN-clinicaltrials@health.nsw.gov.au



The Sydney children's
Hospitals Network